

# THE BALTIC SEA ART PORT

## THE MAIN ART HALL, NATIONAL PAVILIONS and FORUM



### PRE-PROJECT Basic Principles

2017

# TABLE OF CONTENTS

<b>VISIONS FOR DESIGN OF FLOATING PAVILIONS (WXCA, WARSAW) .....</b>	<b>3</b>
<b>BASIC STRUCTURES OF FLOATING MODULES (MEC INSENERILAHENDUSED, TALLINN) .....</b>	<b>7</b>
<b>STANDARDS FOR A PAVILION SAFETY (MEC INSENERILAHENDUSED, TALLINN) .....</b>	<b>18</b>
<b>THE DETAIL PLAN FOR THE BALTIC SEA ART PORT .....</b>	<b>24</b>



**BSAP**  
IDEAS FOR PAVILIONS

WXCA\_26\_10\_2016  
s k e t c h e s



HG ARHITEKTID

THE BALTIC SEA COMMUNITY



← P 228 r n u

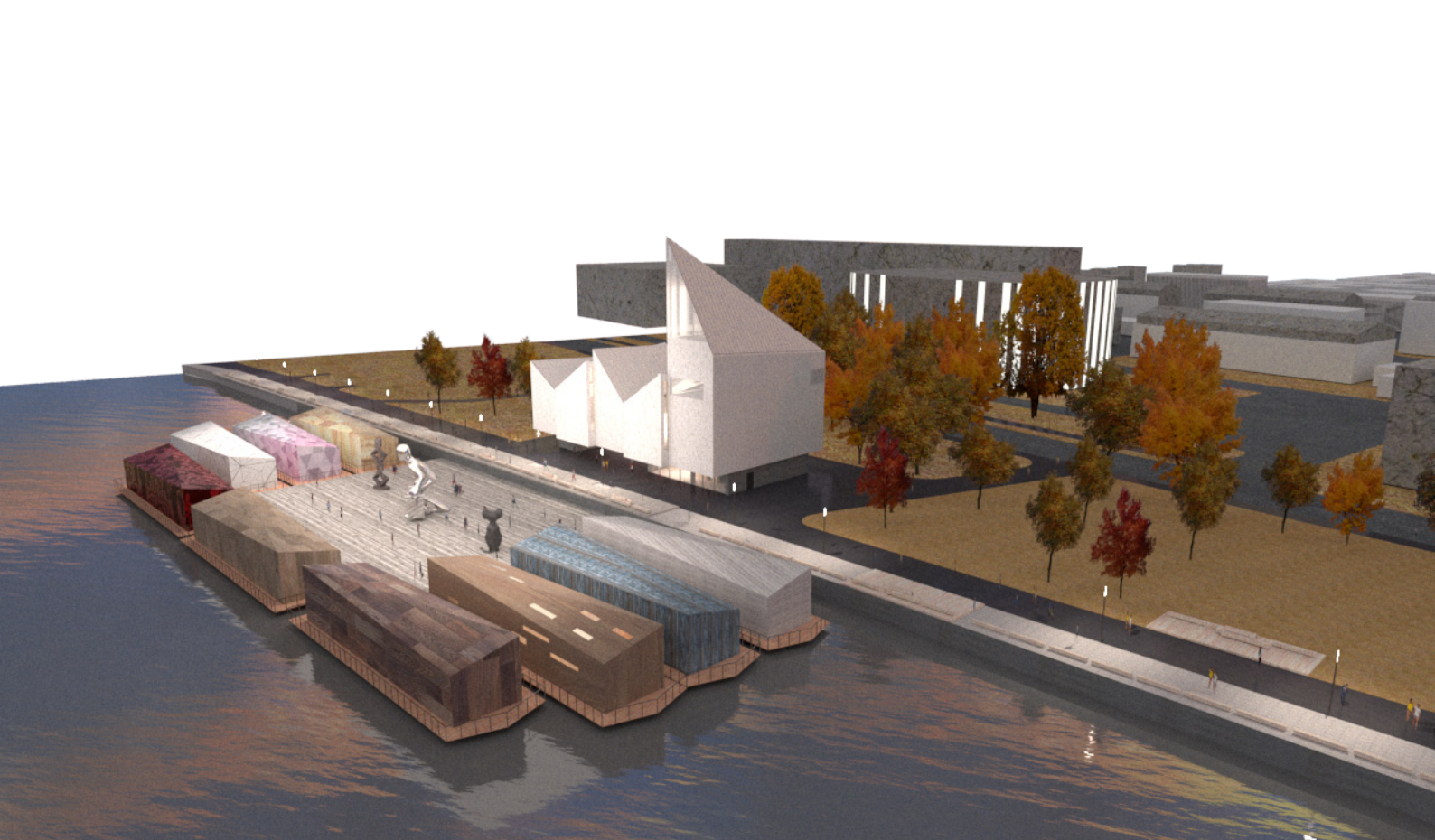




View from the west on the promenade



View from the opposite river bank



Arial view to BSAP



View towards the Forum



Close view to Forum and the main entrance

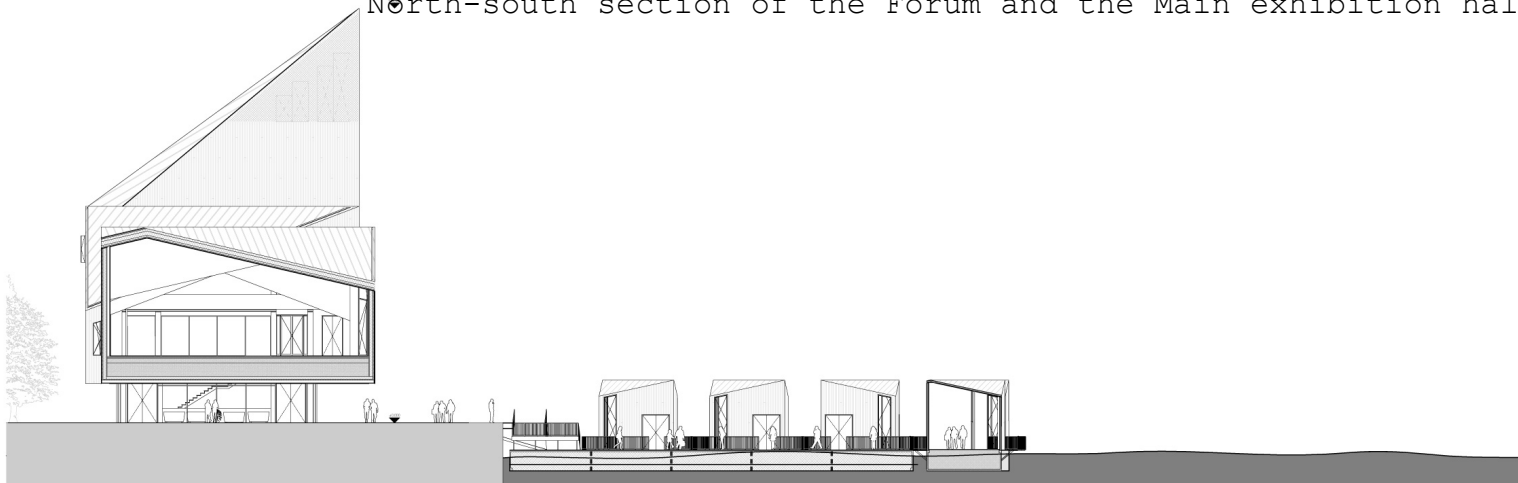


View from the city side(Pärnu concert hall)

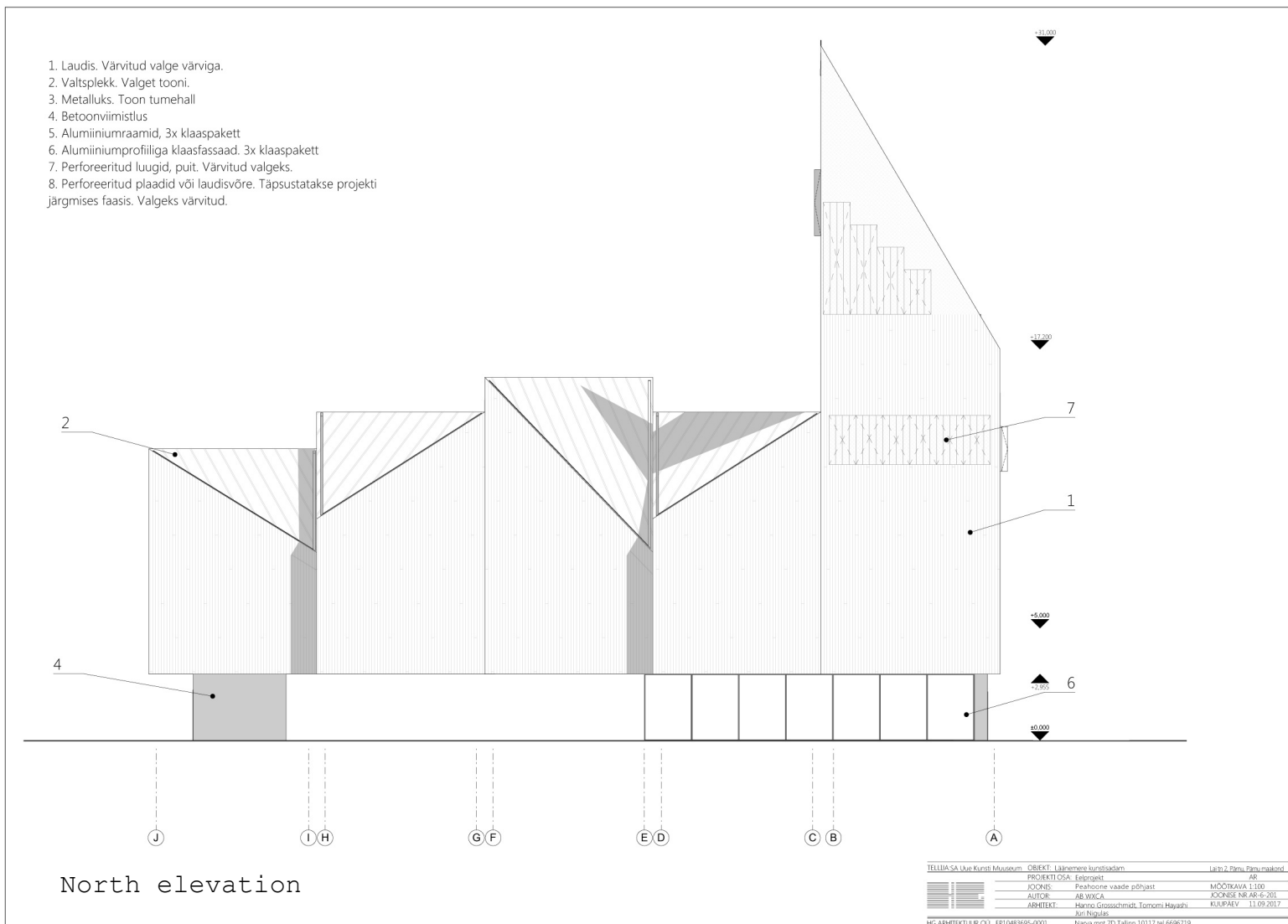
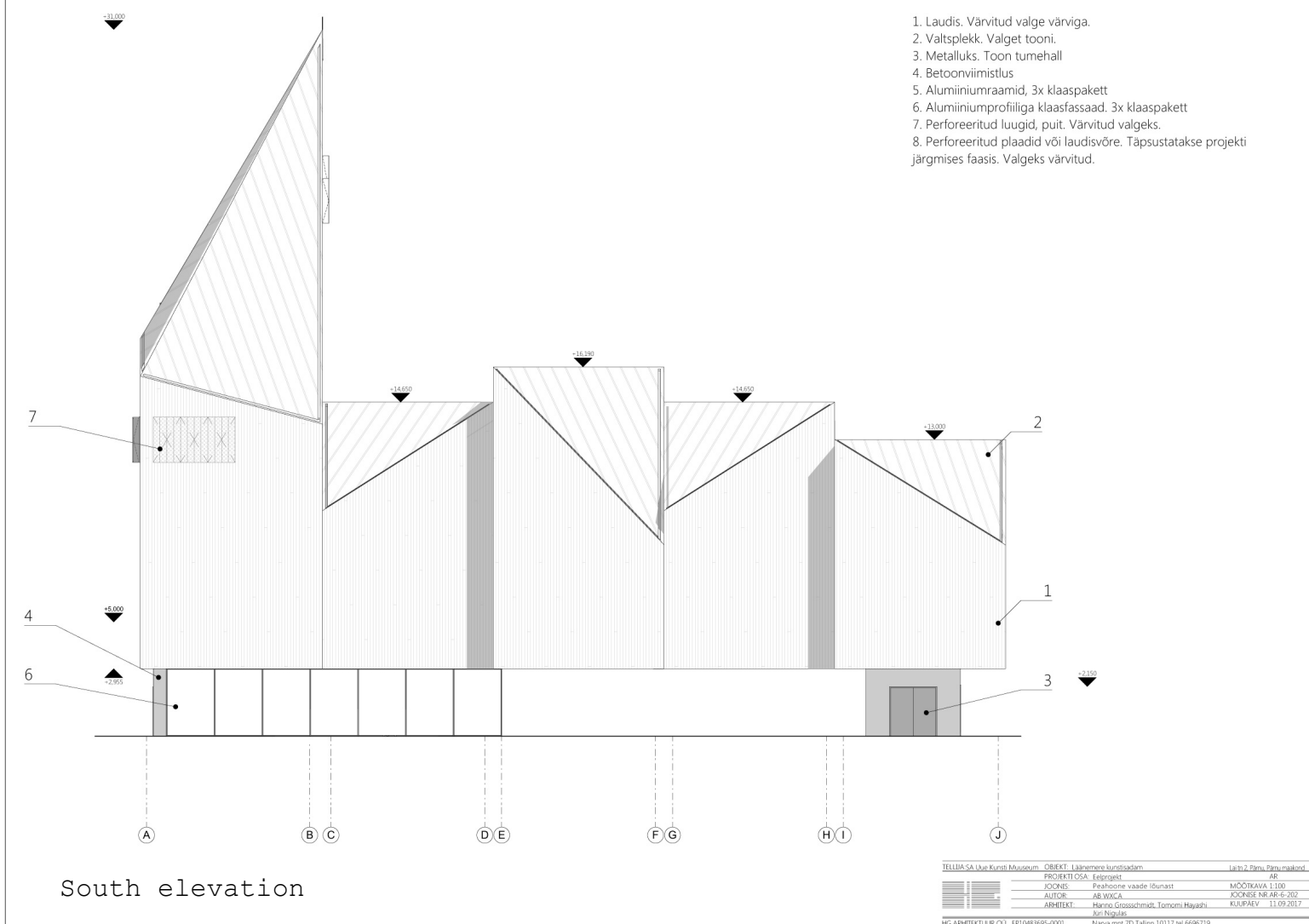
East-west section of the Forum

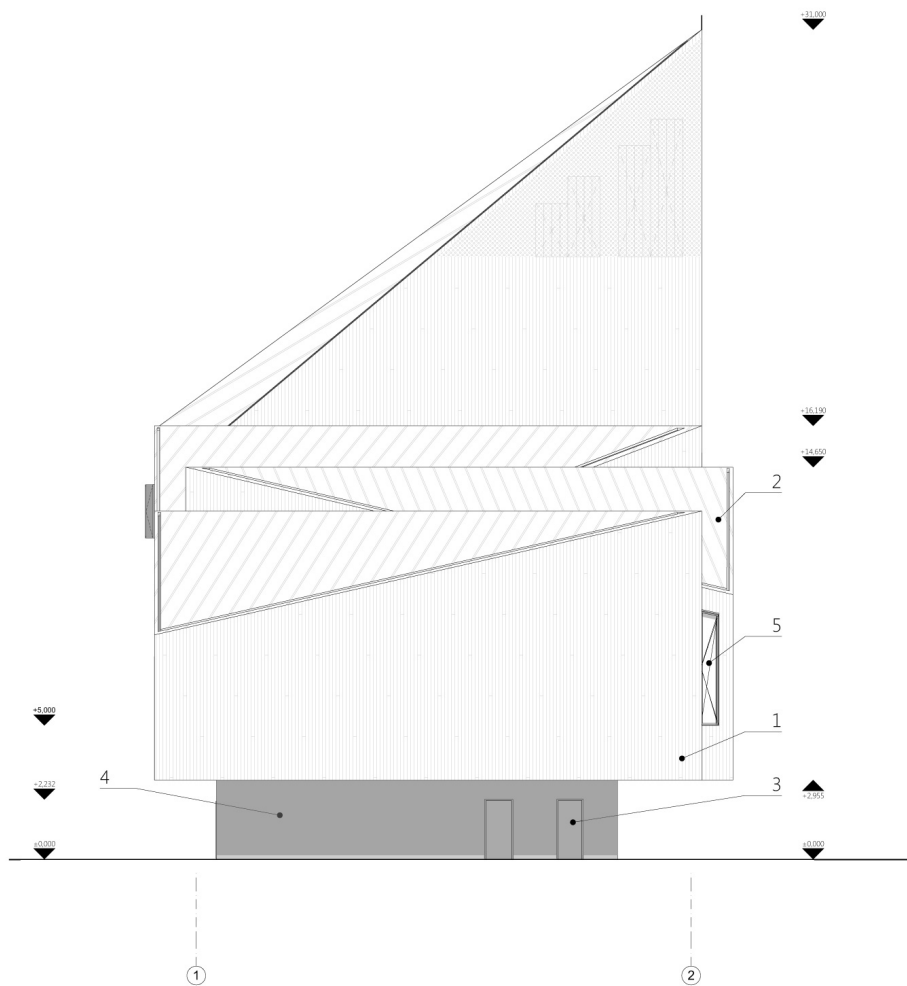


North-south section of the Forum and the Main exhibition hall



TELLIHA-SA Uusi Kuvataiteiden Museumi	OBJEKT: Laittaminen kunnalliseen	Laitte 2. Etelä-Euroopankatu
	PROJEKTIOSA: Eeliprojekt	AR
	JOONAT: Uusi välikäsi L. Löf	MOOITAKAVA 1:200
	AUTOR: ARI MOICA	POHJISEN NÄKÖKULMAN
	ARHITEKTI: Harro Grossschmidt, Tomomi Hayashi	KUUPÄIVÄ 11.09.2017
	ARI Nigulas	
HG ARHITEKTUURIO OY	KPT0483695-0001	Narva-tiimi TD, Tallinn 10117 tel 6696719

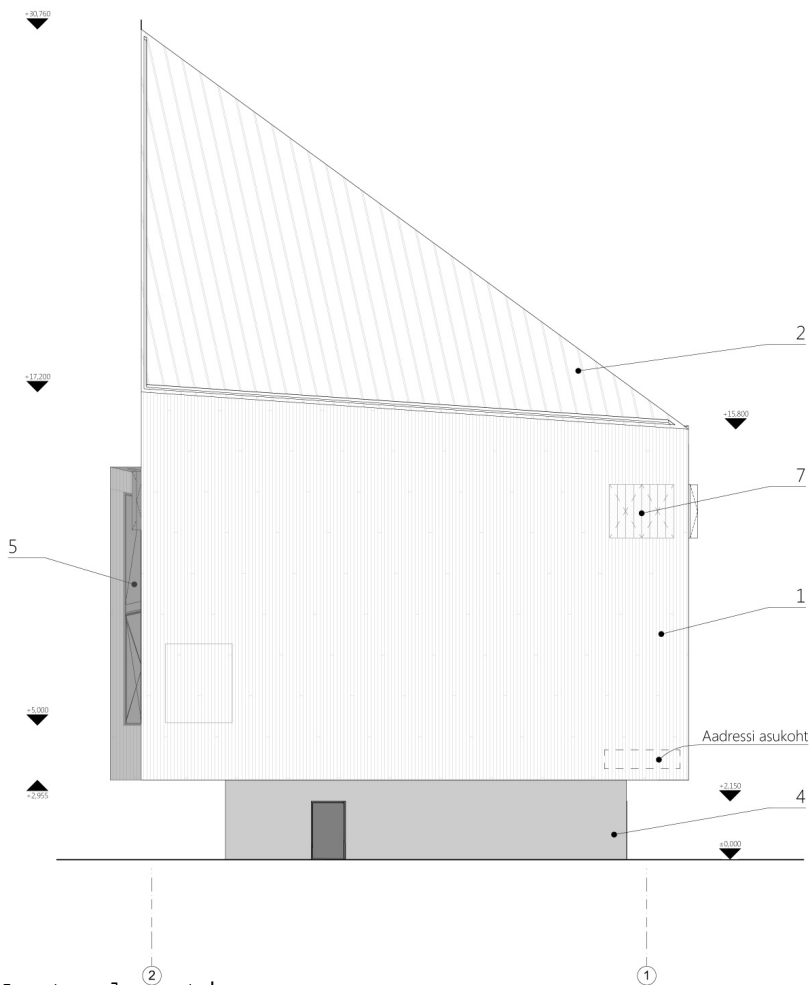




1. Laudis. Värvitud valge värviga.
2. Valtplekk. Valget tooni.
3. Metalluks. Toon tumehall
4. Betooni viimistlus
5. Alumiiniumraamid, 3x klaaspakett
6. Alumiiniumprofiiliga klaasfassaad. 3x klaaspakett
7. Perforeeritud luugid, puit. Värvitud valgeks.
8. Perforeeritud plaadid või laudisvõre. Täpsustatakse projekti järgmises faasis. Valgeks värvitud.

East elevation

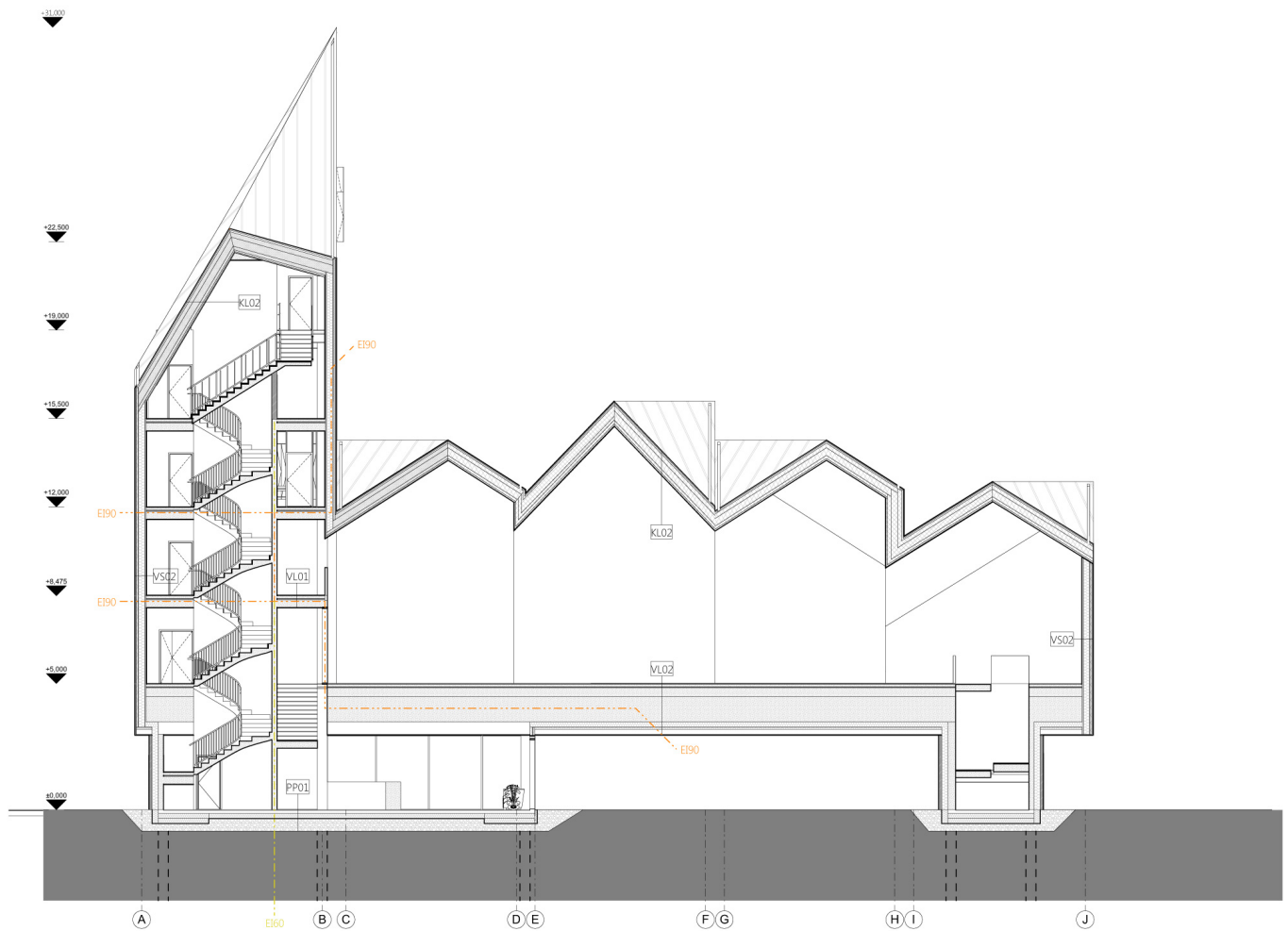
TELLISA SA Uue Kunsti Muuseum	OBJEKT: Läänemere kunstimuuseum	Läti 2. Põlvkond
	PROJEKTIO: Eelprojekt	AR
	JOONIS: Peahoone vaade idast	MÕÖTAKA 1:100
	AUTOCAD: AR.WICA	JOONISE NR: AR-0-203
	ARHITEKT: Hanno Grossschmidt, Tomomi Hayashi	KUUPÄEV: 11.09.2017
	Arhitekt	
HG ARHITEKTUUR OÜ	EP10483695-0000	Narva mnt 7D Tallinn 10117 tel 6696719



1. Laudis. Värvitud valge värviga.
2. Valtplekk. Valget tooni.
3. Metalluks. Toon tumehall
4. Betooni viimistlus
5. Alumiiniumraamid, 3x klaaspakett
6. Alumiiniumprofiiliga klaasfassaad. 3x klaaspakett
7. Perforeeritud luugid, puit. Värvitud valgeks.
8. Perforeeritud plaadid või laudisvõre. Täpsustatakse projekti järgmises faasis. Valgeks värvitud.

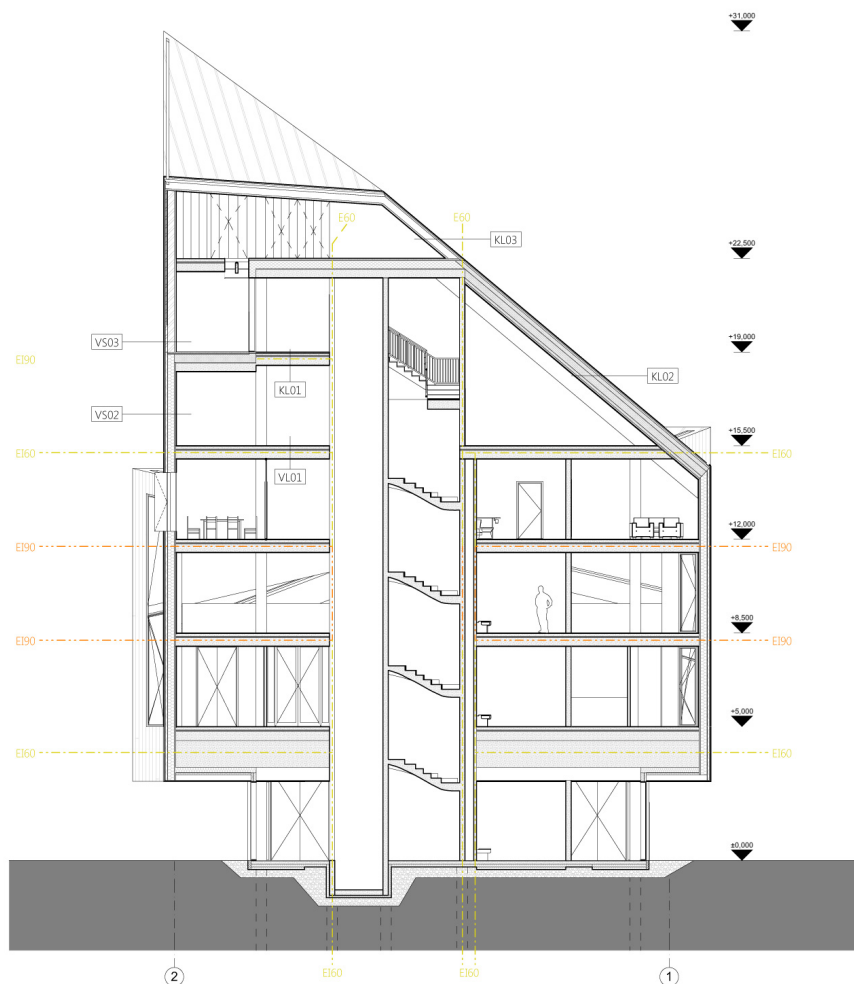
West elevation

TELLISA SA Uue Kunsti Muuseum	OBJEKT: Läänemere kunstimuuseum	Läti 2. Põlvkond
	PROJEKTIO: Eelprojekt	AR
	JOONIS: Peahoone vaade läänest	MÕÖTAKA 1:100
	AUTOCAD: AR.WICA	JOONISE NR: AR-0-204
	ARHITEKT: Hanno Grossschmidt, Tomomi Hayashi	KUUPÄEV: 11.09.2017
	Arhitekt	
HG ARHITEKTUUR OÜ	EP10483695-0000	Narva mnt 7D Tallinn 10117 tel 6696719



Longitudinal section of the main exhibition hall

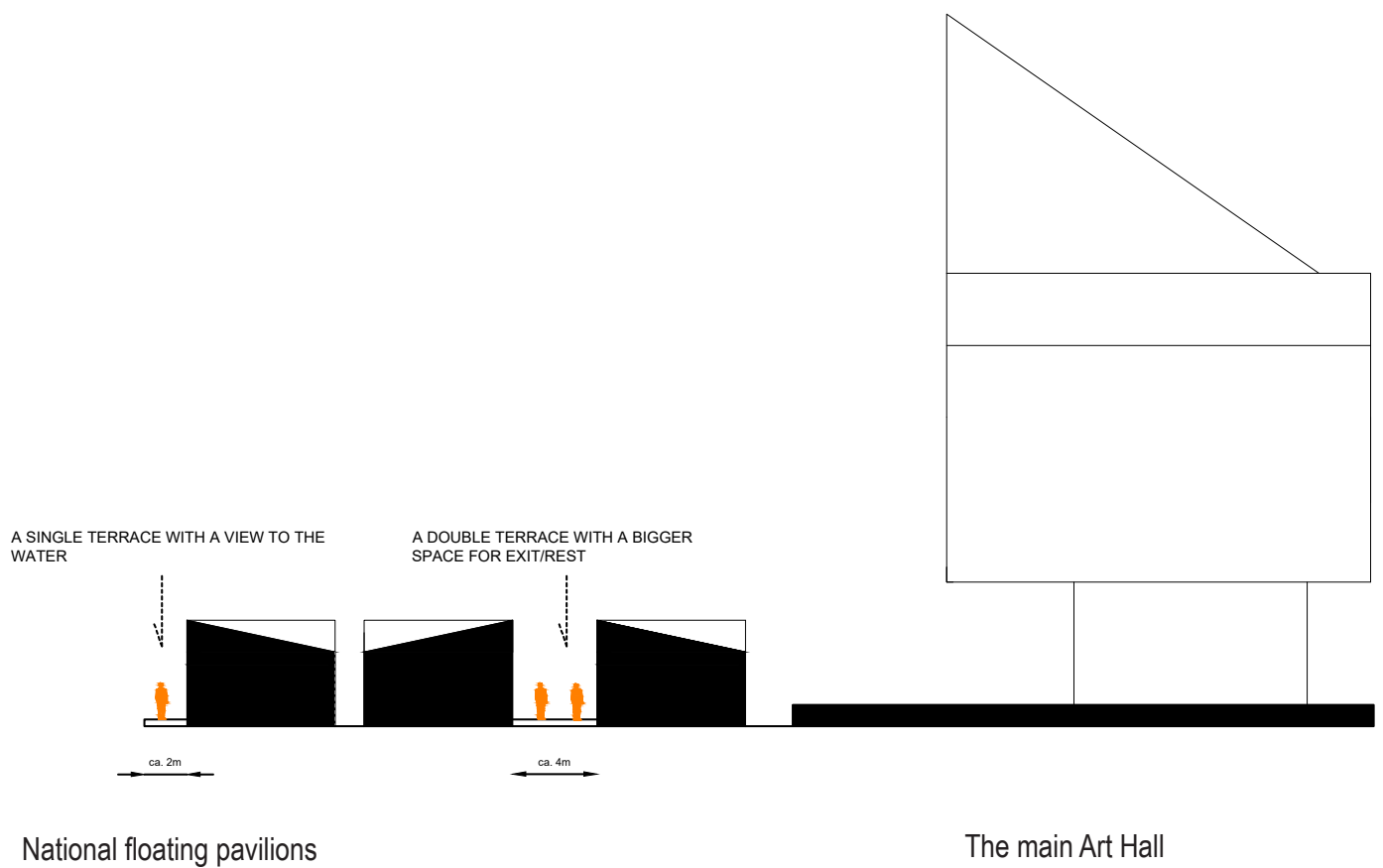
TELLISA SA (Kunst) Muuseum		OBJEKT: Läänemere kuldseadim	Lüch 2 Pärn, Pärn maakond
	PROJEKTI OSA: Eelprojekt		AR
	JOONE: Peahoone Lõige B-B		MÕÕTKIVA 1:100
	AUTOR: AB WYCA		JOONISE NR AR-6-102
	ARHITEKT: Hanno Grossschmidt, Tomomi Hayashi, Juri Niklas		KUUPAEV 11.09.2017
HG ARHITEKTUUR OÜ EP1(483695-0001)		Narva mnt 7D Tallinn 10117 6696719	



Cross section of the main exhibition hall

TELLUASA Kust Kust Museum		OBJEKT: Läänemere külastusdrom	1.a ja 2. Põlvk. Põlvk. maad
		PROJEKTI OSA: Eelprojekt	AR
JOONIS: Põhioone Lõige A-A		MÕÕTKAVA 1:100	
AUTOR: AB WXXA		JÕONISE NR. AR-6-101	
ARHITEKT: Hanno Grossschmidt, Tomomi Hayashi, Juri Nigulas		KULUPAEV 11.09.2017	
HG.ARHITEKTUUR OÜ EP10483695-0001		Narva mnt 7D Tallinn 10110 tel 6696719	

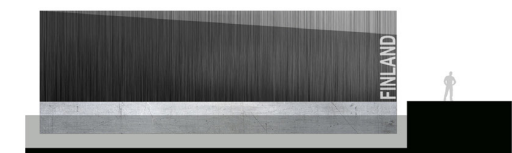
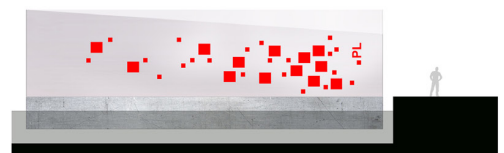
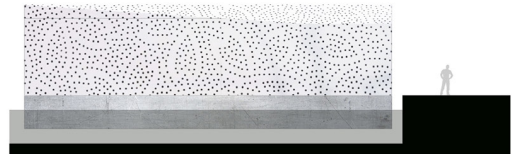
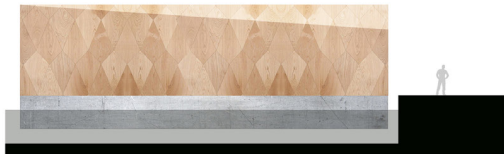
## LOCATION BETWEEN NATIONAL PAVILIONS AND THE ART HALL



## PROPOSAL FOR FACADE DESIGN OF NATIONAL PAVILIONS

The idea for floating square is to enable each Baltic Sea country to develop a unique appearance for its national pavilion - the modular structure is common for all pavilions but their exterior desing must be individual. The range of possibilities to design elevations is very wide - different materials and styles for openings may be used, e.g. wood, wicker or steel (perforated in many styles, resembling a lantern). Every country is welcome to use national symbols and colors from state flag through national birds, fish, flowers etc.

Every country is absolutely free in design of interior of its national pavilion.



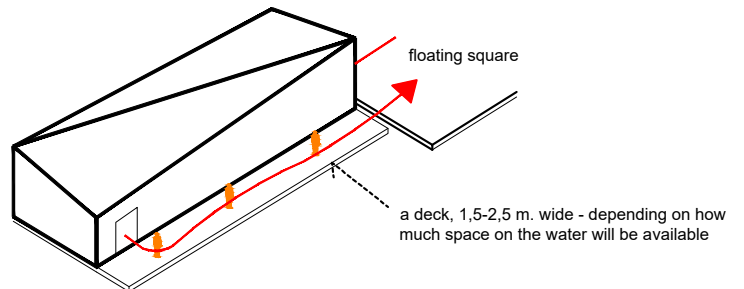
ESTONIA

## POSSIBLE POSITIONS OF A DECK

(final decisions to be made on further stage)

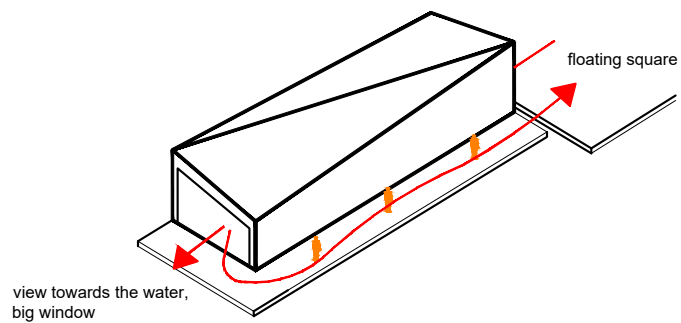
1

a wider deck on one side of a pavilion - it may serve not only as an evacuation path, but also as a nice exit from the exhibition or a balcony/terrace



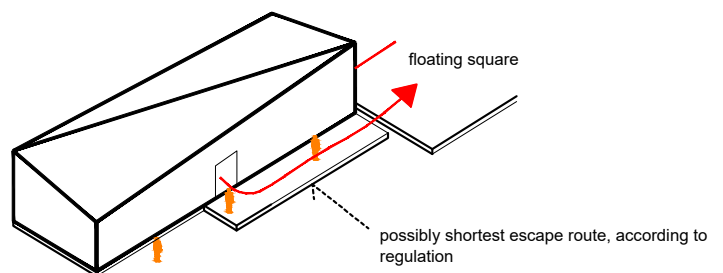
2

additional deck at the end of exhibition route - a viewing terrace to the water (we would recommend a rectangular shape of terraces - it will keep the coherent style of the whole design)



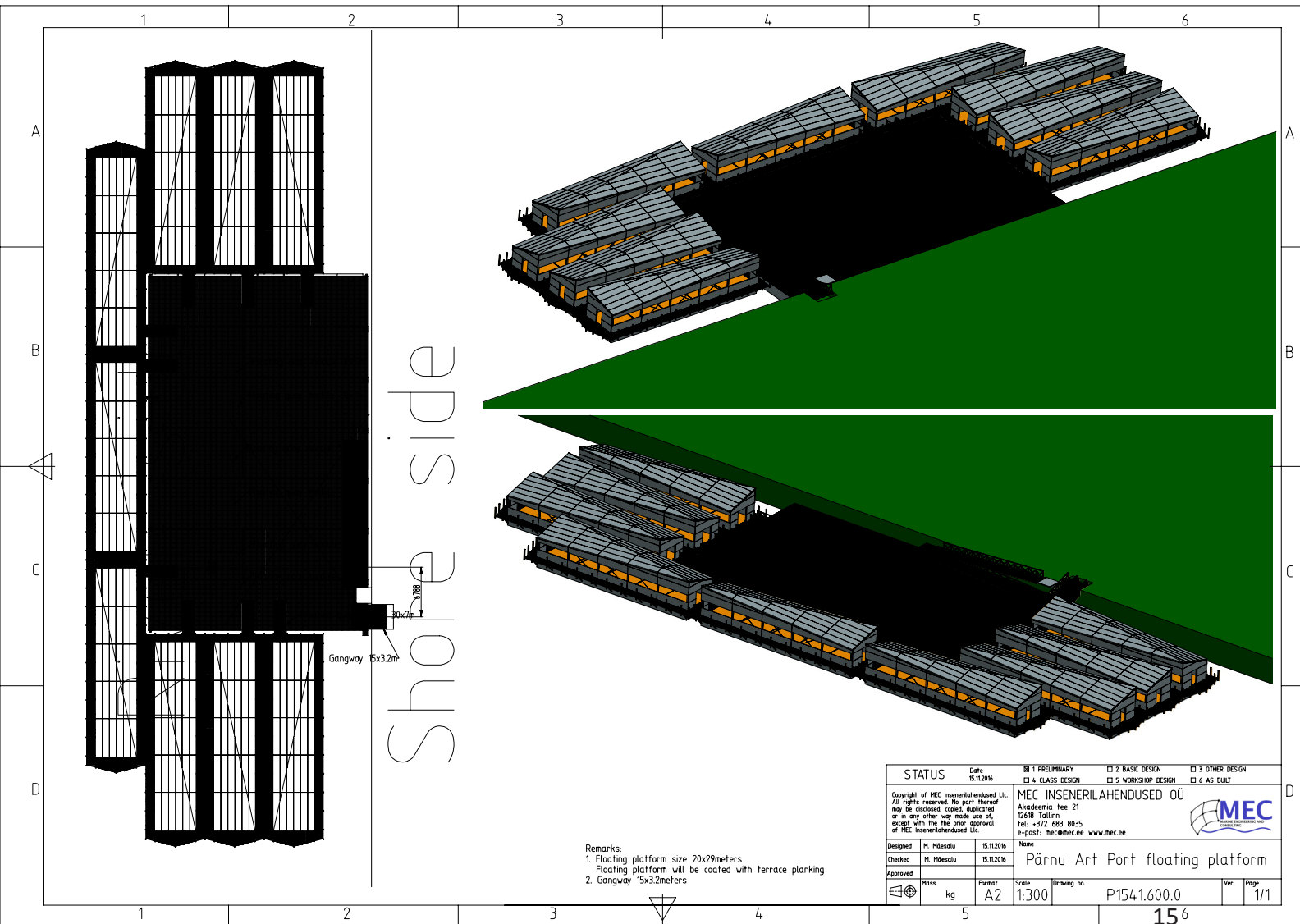
3

a shortest gangway serving as an escape route (the distance between two doors in public interiors in Poland is min. 5 meters)



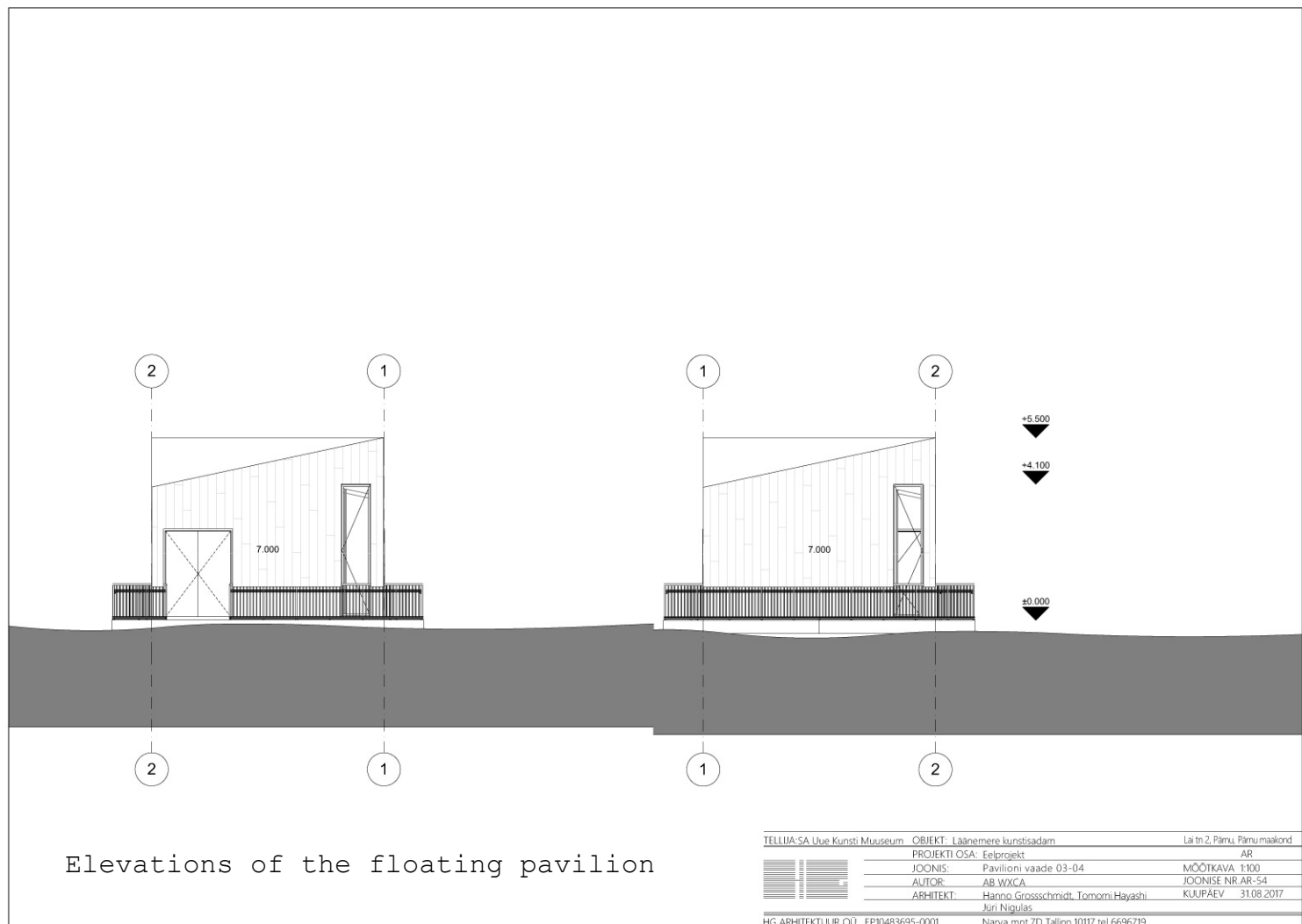
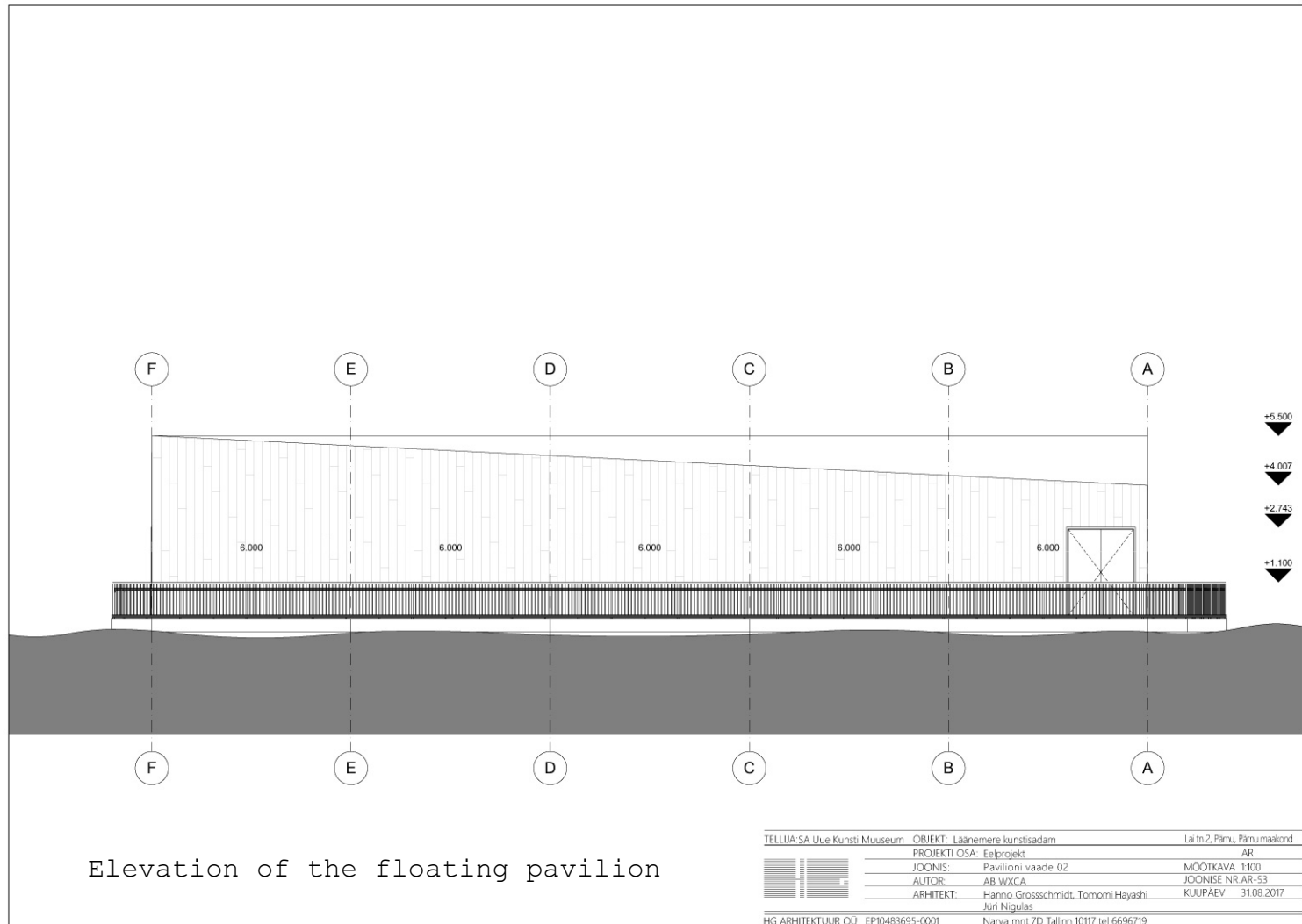
The floating Forum deck will be designed to enlarge the public space between floating national pavilions and to join all of them into a common art space with the main exhibition hall on riverbank.

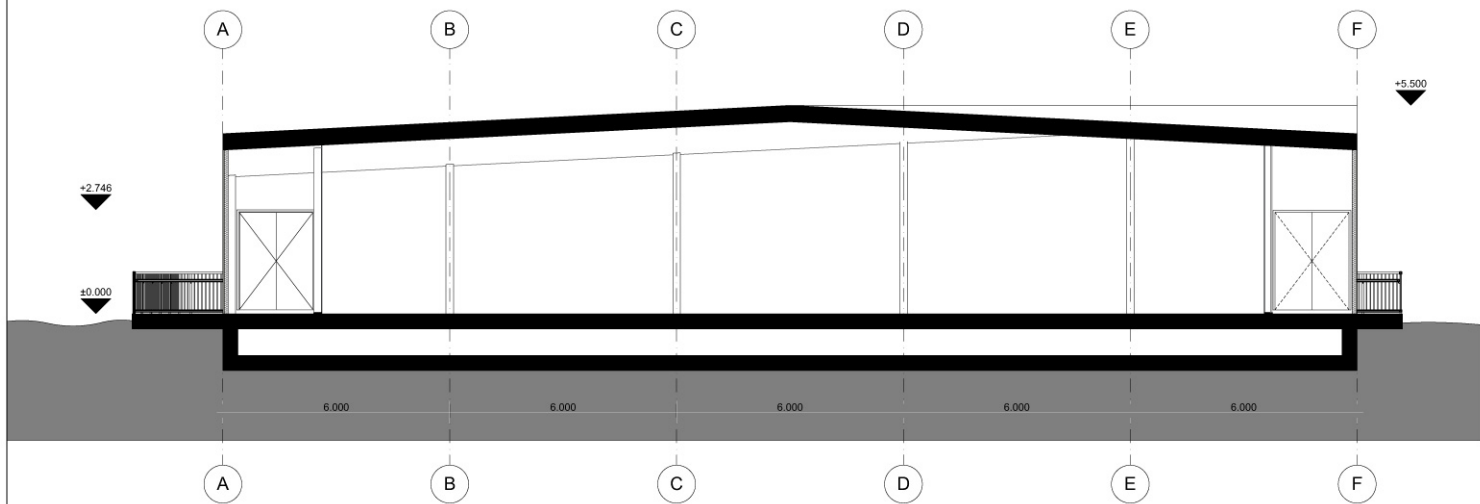
Joining terraces will double the space of Forum and make it more attractive (it would be good to have a possibility of dismantling the balustrade and handrail to unify the space). Mirrored facades of pavilions would make the composition of the Forum square more dynamic and attractive.



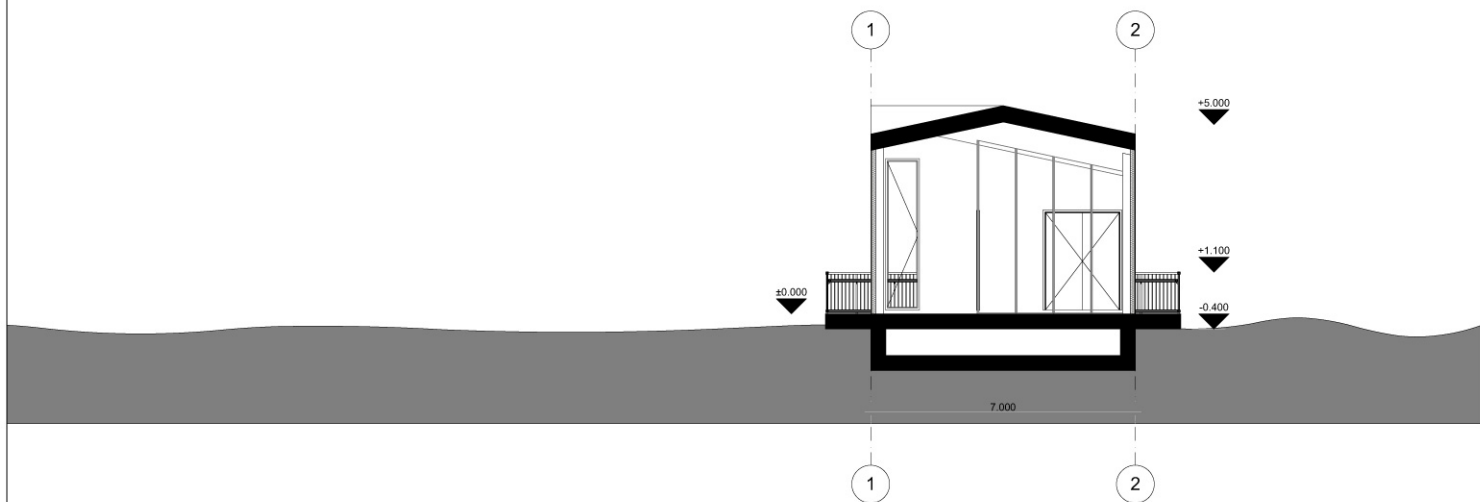
Proposed mooring of floating pavilions by marine engineers



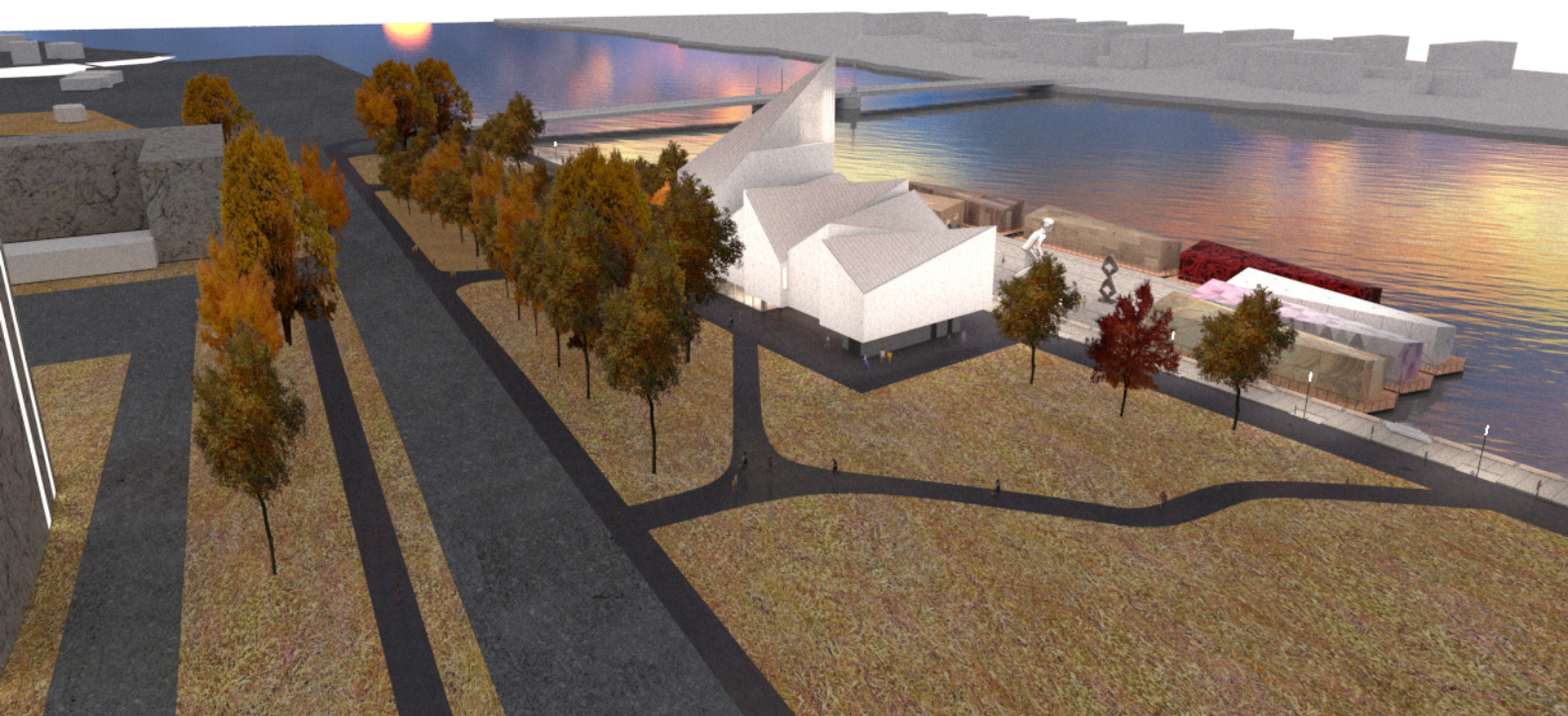




TELLUA-SA Uue Kunsti Muuseum	OBJEKT: Läänemere kunstsadam	Lai tn 2, Pärnu, Pärnu maakond
PROJEKTI OSA: Eelprojekt		AR
JONIS: Pavilioni lõige I-I		MÕÕTKAVA 1:100
AUTOR: AB.WXCA		JONISE NR:AR-55
ARHITEKT: Hanno Grossschmidt, Tomomi Hayashi, Jüri Nigulas		KUUPAEV 31.08.2017
HG ARHITEKTUUR OÜ	EP10483695-0001	Narva mnt 7D, Tallinn 10117 tel 6696719



TELLUA-SA Uue Kunsti Muuseum	OBJEKT: Läänemere kunstsadam	Lai tn 2, Pärnu, Pärnu maakond
PROJEKTI OSA: Eelprojekt		AR
JONIS: Pavilioni lõige II-II		MÕÕTKAVA 1:100
AUTOR: AB.WXCA		JONISE NR:AR-56
ARHITEKT: Hanno Grossschmidt, Tomomi Hayashi, Jüri Nigulas		KUUPAEV 31.08.2017
HG ARHITEKTUUR OÜ	EP10483695-0001	Narva mnt 7D, Tallinn 10117 tel 6696719



Arial view of BSAP from the south east